



WASHINGTON STATE UNIVERSITY  
**TRI-CITIES**

# **BOARD OF REGENTS MEETING**

March 6-7, 2025

# **2024** **HIGHLIGHTS**



**National  
Recognition**



**Local  
Activities | WSU  
System Impact**



**Local  
Engagement**



# National Recognition - Faculty



**JOSHUA HEYNE**

Director, Bioproducts, Sciences,  
and Engineering Laboratory

Co-director of the WSU-PNNL  
Bioproducts Institute (BIO-IN)

**Named most cited, most published  
and most productive researcher in  
the field of SAF research from  
2001 to 2023**

**Murdock grant**



**CHANGKI MO**

Academic Director, School of  
Engineering & Applied Sciences

**Named Fellow,  
American Society of Mechanical  
Engineers (ASME)**



**BIN YANG**

Professor, Biological Systems  
Engineering

**Fulbright-Tocqueville Distinguished  
Chair Award**



**NOEL SCHULZ**

Director, Institute for Northwest  
Energy Futures (INEF)

**Newly Elected Board of  
Director, Institute of Electrical and  
Electronics Engineers (IEEE)**





# National Recognition - Staff



**LAURA SANCHEZ**  
Director, Student Services



**SYLVIA VAN BREDA VRIESMAN**  
Assistant Director, Student Services




**NASPA**

Student Affairs Administrators  
in Higher Education








# National Recognition - Campus



RegisterLoginBecome a MemberFind A Job

## Washington State University Tri-Cities



Washington is another state facing demographic challenges and plummeting college-going rates, and its six-campus public university system is still in the trenches; overall system enrollment is down 3 percent this fall.

But at the Tri-Cities campus in Richland, overall undergraduate enrollment is up 5 percent and first-year enrollment is up 16 percent, marking its largest ever freshman class and bucking the regional trend.

Much like at Temple, Tri-Cities admissions director Jamie Owens attributed the jump largely to new in-person recruitment initiatives with local high schoolers and a targeted investment in communicating with prospective families around the FAFSA fiasco.

"Our team worked very hard this past year to deliver financial aid information to our incoming students as quickly as possible," Owens wrote in a statement.

INSIDE  
HIGHER ED





# Local Activities with WSU System Impact



Institute for Northwest  
Energy Futures  
Ribbon Cutting  
& Open House

Teaching  
Laboratory  
School  
Designation







# Local Engagement

Elson S. Floyd  
Dedication



WSU Tri-Cities  
35th Anniversary  
Celebration



Tri-City People of  
Influence Recipient



Apple Switch  
at GESA  
Carousel of  
Dreams



Hosted an Ironman  
Triathlon Aid Station





**WSU TRI-CITIES**

# **ACCOMPLISHMENTS TOWARD STRATEGIC GOALS**



**Student Success**



**Research & Scholarship**



**Accessibility & Equity**



**Regional & Community  
Engagement**



**Campus Culture &  
Environment**



**Institutional  
Effectiveness**



**WSU TRI-CITIES**

# **BUDGET**



# Budget Challenges & Successes

## Successes

- Eliminated \$1.7 million in bad debt
- Developed and maintained healthy fund balances

## Challenges

- Rising costs
- Deferred maintenance
- Personnel expenses

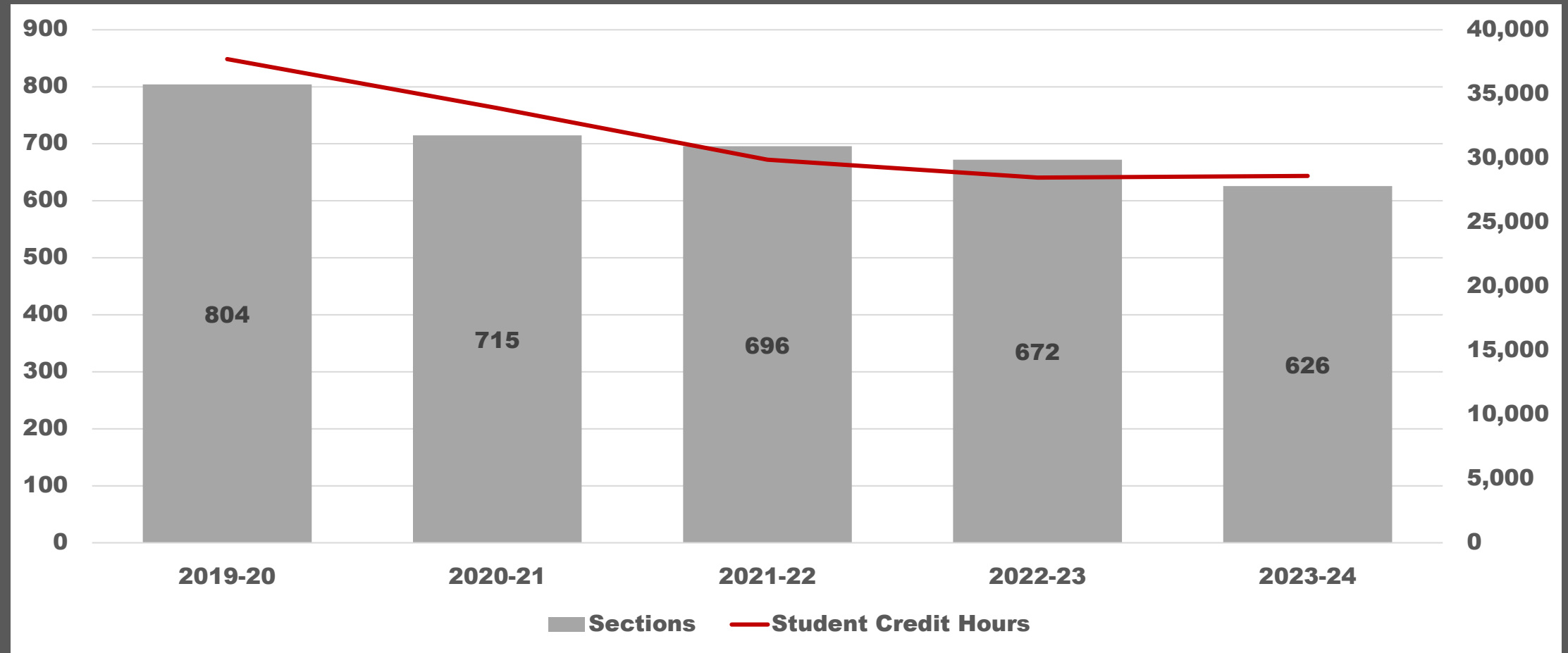


**WSU TRI-CITIES**

# **ACADEMIC PORTFOLIO & RESOURCES REVIEW**

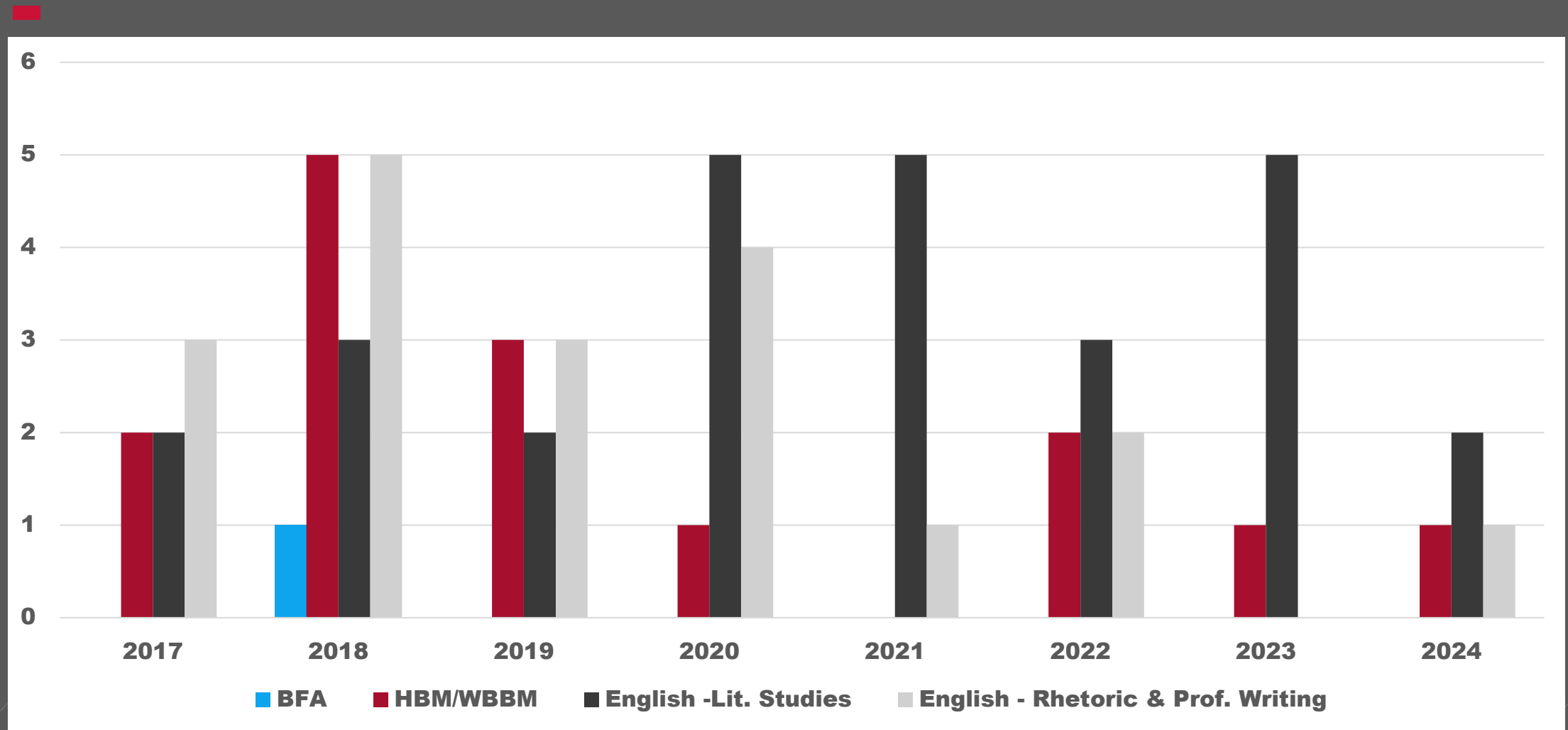


# Total Sections and Student Credit Hours, Offered by Tri-Cities





# Number of Graduates 2017 - 2024



**WSU TRI-CITIES**

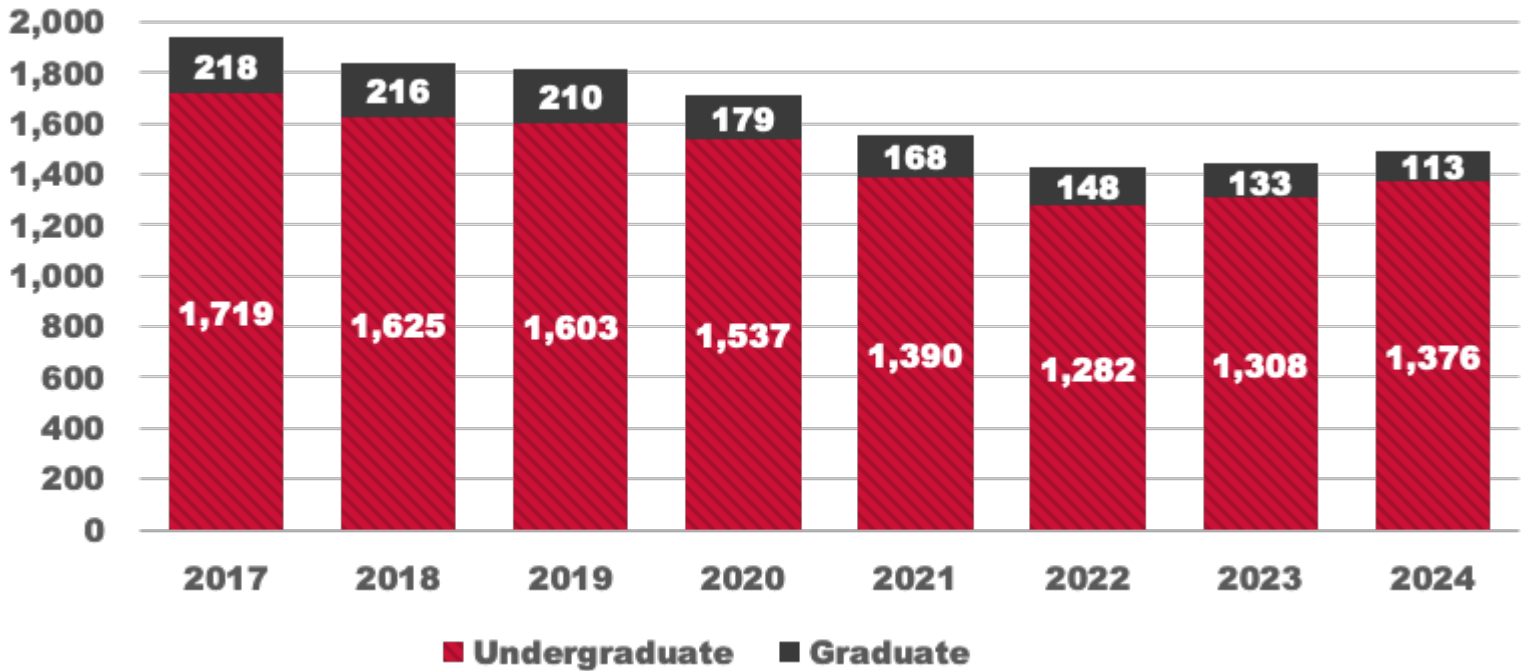
# **ENROLLMENT & RETENTION**





# WSU Tri-Cities Enrollment

## Fall 2024



**UNDERGRAD** students

↑ **5%**

**TOTAL** enrollment

↑ **3.3%**

**TRANSFER** students

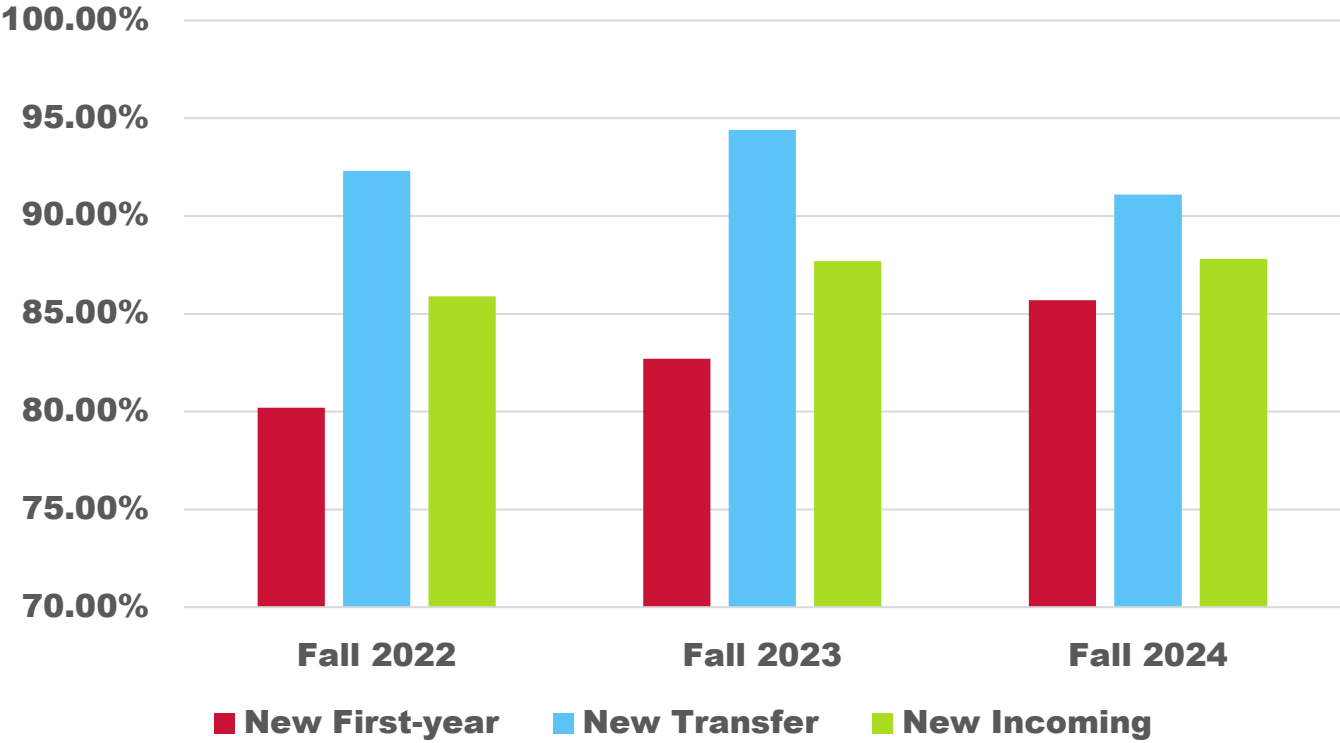
↑ **2%**

**FIRST-YEAR** students

↑ **16%**

# Retention

## Fall 2024

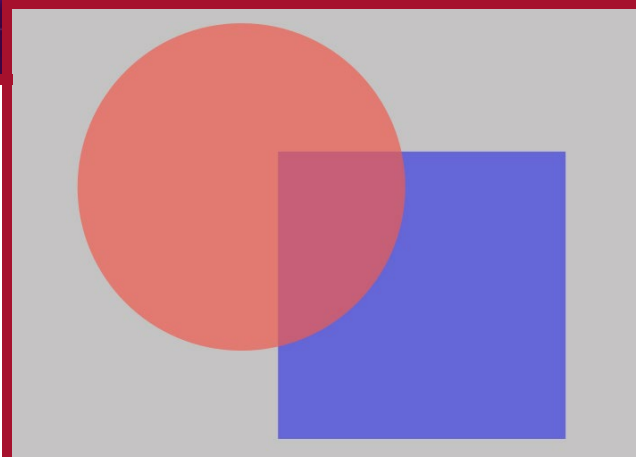
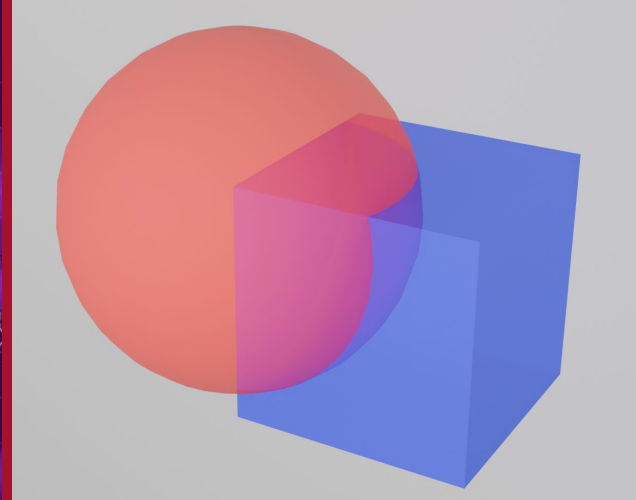
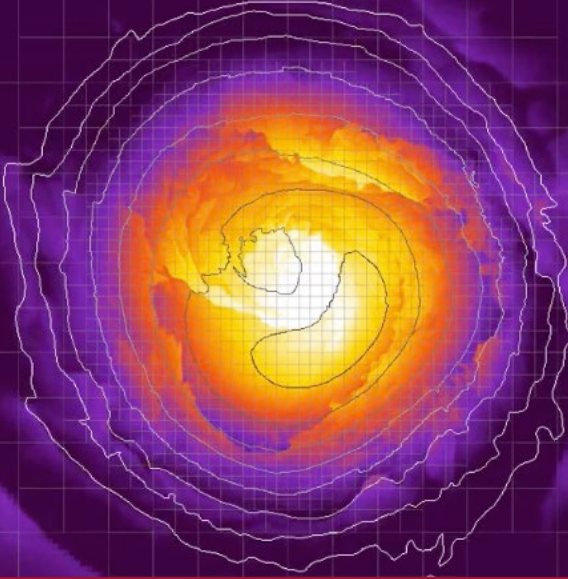


Source: MyWSU census data. Office of Strategy, Planning, and Analysis, Jan. 28, 2025

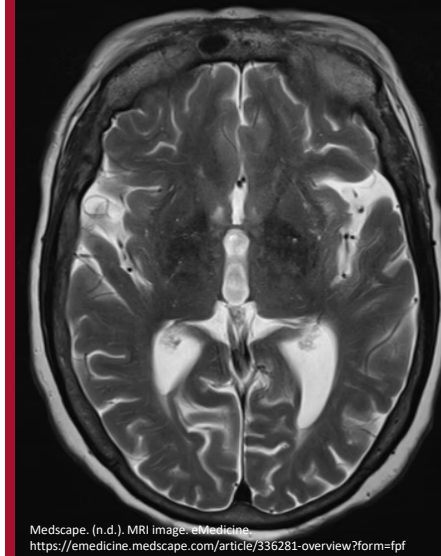
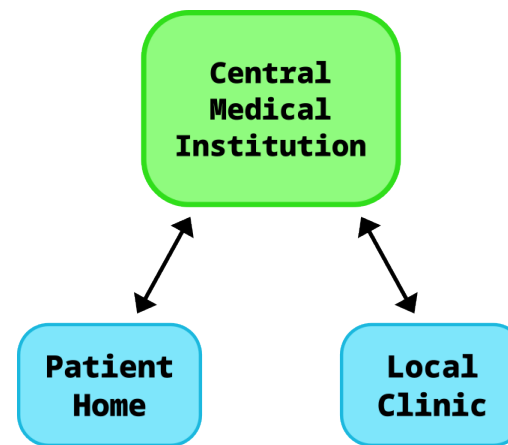


**DIEGO RANGEL MONROY**

**Battelle Summer Scholar**



## Radial Averaging for Cartesian to Polar Mappings

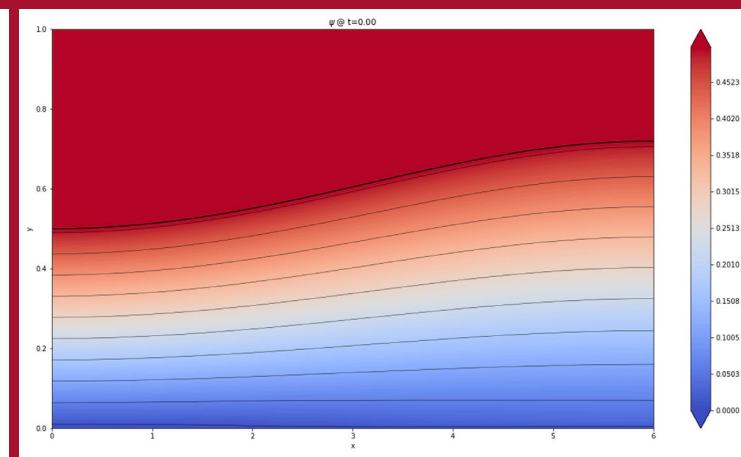


Medscape. (n.d.). MRI image. eMedicine.  
<https://emedicine.medscape.com/article/336281-overview?form=fpf>

## Multimodal Federated Learning For Alzheimer's Disease Detection



## Physics-Informed Deep Learning in Fluid Dynamics







# **QUESTIONS & ANSWERS**





Thank You &  
Go Cougs!